



**CHANNEL JUMPER**  
FINEST QUALITY SINCE 1976











# Channel Jumper Ltd.

**WITH OVER 40 YEARS OF FAMILY TRADITION, OUR COMPANY WAS STARTED AS A COTTAGE INDUSTRY IN 1976 ON THE ISLAND OF ALDERNEY, PART OF THE BAILIWICK OF GUERNSEY.**

After not having any knitting business based on our island for 50 years, we set out to revive the Alderney knitting heritage and preserve it for future generations.

Even though we have adapted to new technologies over the years, the individual spirit of our traditional knitwear remains the same. All our products are hand finished and made to order by our local artisans with decades of experience.

Today, we produce a wide range of Guernsey, Alderney and Jersey jumpers applying both traditional patterns and contemporary designs. Each of our Jumpers is crafted using only the finest British Worsted Wool.

---

Today the company produces a wide range of Guernsey, Alderney and Jersey jumpers.

# Our Island

**CHANNEL JUMPER IS BASED ON THE BEAUTIFUL ISLAND OF ALDERNEY IN THE CHANNEL ISLANDS, 60 MILES FROM THE SOUTH COAST OF GREAT BRITAIN AND ONLY 10 MILES FROM THE COAST OF FRANCE.**

Just a stone's throw from the south coast of England lies the treasured island of Alderney. Much lesser known than its larger sister isles, Guernsey and Jersey, this comparatively small island (just 3½ miles by 1½ miles at its widest point) is a hidden gem with beautiful beaches, rich heritage, precious wildlife and stunning scenery all waiting to be discovered.

With a strong fishing community, the tradition of the Guernsey jumper is just as relevant to Alderney as it is to its larger neighbouring islands. In fact, the legacy of the Guernsey is so important to Alderney that it has its own version of the Guernsey named after it, of which it is understandably proud.

A much slower pace of life is one of the greatest delights of visiting our island. Getting out and about on foot to explore many of the fascinating historical sites, huge diversity of wildlife on offer or just taking in the fresh sea air is one of the most enjoyable ways to experience Alderney's natural, unspoilt environment.

The natural qualities of our knitwear are in keeping with the beautiful environment in which we live. Should you decide to visit, we are sure you will recognise why this is so important to us. Please visit [www.visitalderney.com](http://www.visitalderney.com) if you would like to know more.











## *Worsted Wool*

*\ wü-stəd 'wül \*

*first developed in the 12<sup>th</sup> century, is made through a process of carding, combing, and spinning to achieve long and parallel fibres.*

*This results in stronger, finer, and smoother wool.*





# Finest British Worsted Wool

**OUR WOOL STARTS ITS LIFE UPON  
THE FELLS AND DOWNS OF THE  
BRITISH COUNTRYSIDE.**

The garments we produce use Worsted wool which is hand graded for the finest quality and fibre thickness. This results in a sustainable, completely natural garment.

Our knitwear uses 100% certified British wool ensuring a natural, sustainable and biodegradable garment that lasts for many years. The sheep from which our wool is sourced are sheared by licensed and trained professionals that uphold animal welfare and safety.



License No.  
GBO011 – 1









*Our traditional sweaters are knitted with close stitches from tightly twisted wool to withstand wind and cold weather*

# The Traditional Guernsey

## A PRODUCT OF ISLAND LIFE

The traditional Guernsey sweater has a story to tell. The rib at the top of the sleeve is said to represent a sailing ship's rope ladder in the rigging, the raised seam across the shoulder a rope, and the garter stitch panel represents waves breaking upon the beach.

The traditional Guernsey sweater was originally a local fisherman's working garment, hence the diamond under the arm for ease of movement and

extra strength. It is knitted with close stitches from tightly twisted wool and this guarantees a long-lasting garment that keeps its shape. Traditional Guernsey sweaters were knitted by the womenfolk of the fishing and farming families of the islands, when many earned their living from the sea or the land. The distinctive pattern was handed down from generation to generation and the knitting skills passed on from mother to daughter.









---

Burhou, the Traditional Guersney  
in Loden Green





---

Burhou, the Traditional Guersney  
in Burgundy

# Lord Nelson and the Guernsey

The Guernsey had become well known by the 19<sup>th</sup> century. Nelson recommended it to the Admiralty as a valuable article of Naval clothing and, in 1857, the soldiers of the garrison in Halifax, Nova Scotia were issued with Guernseys as part of their winter equipment.

To this day our traditional Guernsey knitwear is produced using age old techniques that have been tried and tested for more than a century.

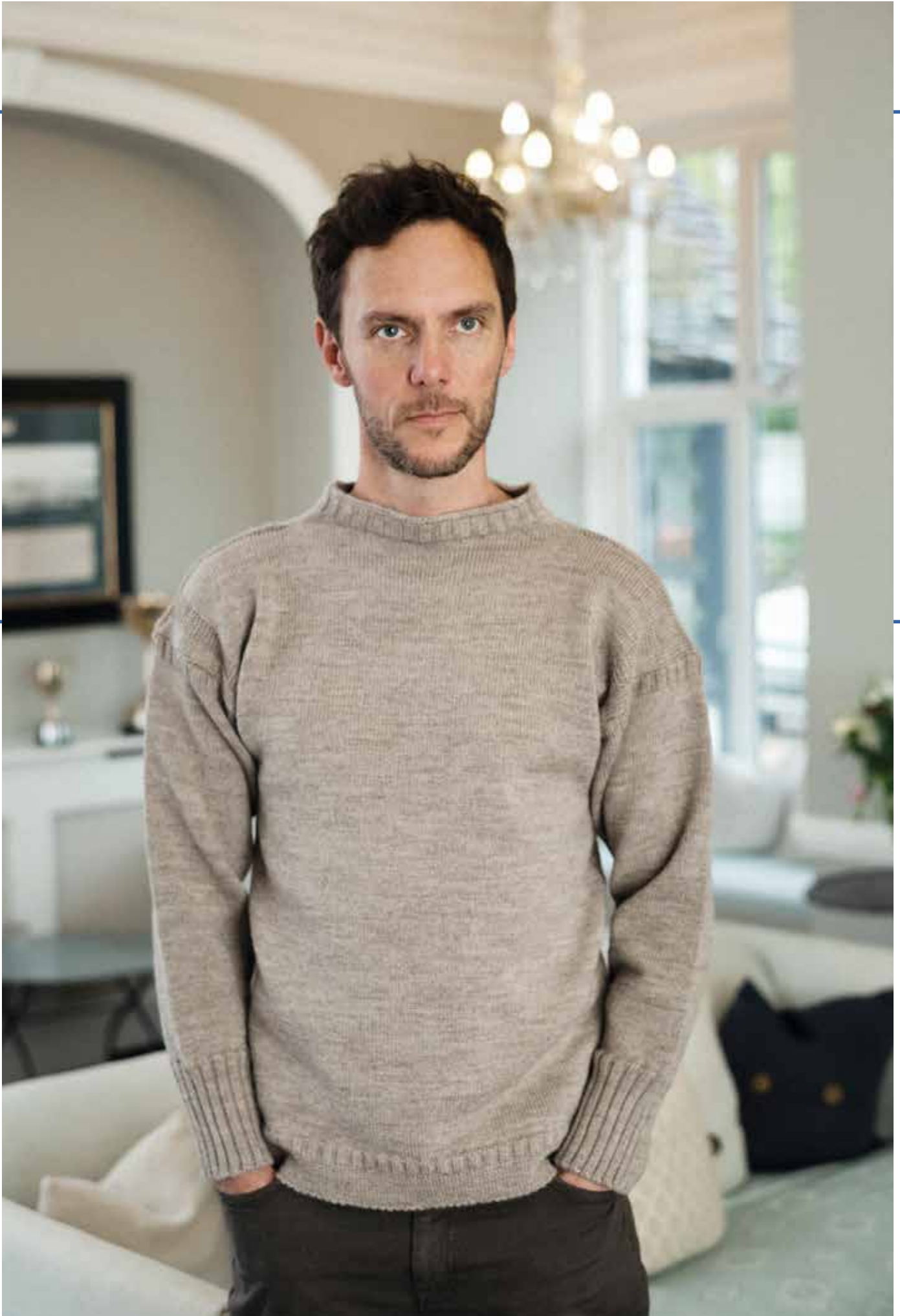


## Royal Approval

The traditional Guernsey sweater has always been made from the best English worsted wool since the 16<sup>th</sup> century, when licenses were granted by the crown to import wool from England. Elizabeth I and Mary Queen of Scots both owned Guernsey knitwear.

*We are proud to preserve  
a long legacy of Guernsey  
Knitwear. Wearing one of our  
jumpers means wearing a  
piece of British history*







---

**Burhou**

The Traditional Guernsey



---

**Puffin**

The Wide-Striped Guernsey



---

**Ellis**

The Half Fine-Striped Guernsey



---

**Casquets**

The Fine Striped Guernsey





---

Our Traditional Guernsey is unisex  
and can be worn front-to-back





---

We push the boundaries of Guernsey Knitwear by thoughtfully developing new patterns and colour combinations.





---

**Corblets**

The Quarter-Zipped Guernsey



---

**Zigzag**

The Stippled Jumper



---

**The Alderney**



---

**The Jersey**





# The Alderney

Originally, the Guernsey was the traditional jumper worn by island fisherman, regardless of which Island they came from. When Channel Jumper was established in 1976, the intention was to revive the Alderney sweater, a unique variation of the Guernsey with the Alderney Lion holding a sprig knitted into the front of the jumper. This was in keeping with the Island's coat of arms.

Looking back at the time that the original Alderney jumper first came into being, many other knitting patterns were also in use. The unique design of our Alderney incorporates both the original features of the Alderney plus additional patterns relating to the time of its conception. This distinguishes it even more so from the traditional Guernsey.



The flag of Alderney

# Beyond the Tradition

We are aware of the social and environmental impact the fashion industry can have on our planet and its workers. Channel Jumper is committed to a more sustainable and ethical future by producing long-lasting products crafted by local artisans using natural resources.

We use only 100% pure British Worsted wool coloured with natural dyes. This supports local wool producers and keeps supply chains short and low impact. Channel Jumper is also does not use any additional plastic in production and packaging.

Every jumper is made to order and is hand finished with dedication to our craft. We aim to make our tradition accessible to a younger generation who appreciate the longevity and practicality of a well-made hard-wearing Guernsey Knitwear.











Channel Jumper Ltd  
Braye Harbour  
Alderney, GY9 3XX  
Bailiwick of Guernsey  
Channel Islands

+44 1481 822 202  
[info@channeljumper.com](mailto:info@channeljumper.com)

[CHANNELJUMPER.COM](http://CHANNELJUMPER.COM)